

ANNUAL REPORT 2024



FOUNDATION FOR
MOTHER & CHILD HEALTH
INDIA





2023–24: The Year of Exploration

Exploration is the driving force of human progress. It is about venturing into the uncharted, facing the unknown with courage and returning with newfound understanding. It is this spirit of exploration that led explorers to discover new lands, scientists to unravel the mysteries of the universe and artists to create groundbreaking works.

FMCH is on the same path. We are not just exploring new places to spread our work, we are also finding new ways of thinking, new solutions to old problems and new perspectives on the world around us.

This year has been a journey of exploration for us, and thus, is the theme of our annual report. Here are the highlights of this adventure.

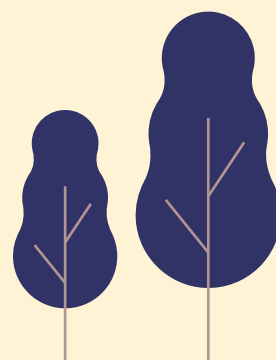


Table of Contents

01

**CEO's Note
for 2023-24**

02

**Our Programs
& Impact**

08

Innovations

14

Expansion

17

The Team

22

Recognition

25

**Message from
the Chairperson**

26

**Audited Financial
Report**

28

Partners

29

Contact Us



CEO's Note for 2023-24



Dear Team, Partners, and Supporters,
As we close the chapter on 2023-24, I am filled with a sense of awe at what we've achieved together. This year, our theme was Exploration. We pushed boundaries, ventured into the unknown, and piloted new technologies. We expanded our footprint to new locations, reaching more communities. And in doing so, we discovered not only new ways to work but also new parts of ourselves.



Reflecting on the year gone by, I am reminded of treks across hills. It was a big one that we climbed – and the view is definitely worth the effort! And I see the many hills in front of us as well.

Exploration, by its nature, is exhilarating. It is also exhausting. As we reflect on our journey, we must also acknowledge the fatigue that comes with constant growth and change. Just as a traveller must pause to rest and refuel, we too must find moments to breathe, to recharge, and to prepare for the next leg of our journey.

But let's not forget the excitement that exploration brings. We ventured into Chattarpur, Madhya Pradesh, and Ullhasnagar, Mumbai. We experimented with new tools like NuTree Lite, ChatBots, AI powered ChatBots, Health Indicator Tapes – and so much more!

Each of these pilots could redefine our work. We expanded our team to 100 strong, welcoming new leaders who bring fresh perspectives and energy. We doubled our impact, reaching 40,000 families, all while reducing costs and maintaining our commitment to quality.



Yet, with all this exploration comes the need for reflection. How do we balance the thrill of discovery with the need for stability? How do we ensure that our rapid growth is sustainable? And how do we make time for rest in a world that never stops moving?

As we look ahead, let's embrace both the excitement of exploration and the necessity of rest. Let's continue to push boundaries, to ask questions, and to seek out new solutions. But let's also remember to pause, to reflect, and to care for ourselves and each other.

To our incredible team, thank you for your tireless dedication and unwavering spirit. To our partners and supporters, thank you for being with us every step of the way. Together, we've explored new worlds, and together, we'll continue to soar.

With gratitude and anticipation,
Shruthi Iyer

Our Programs & Impact



Poshan Initiatives – Direct Intervention

At the heart of our mission is the well-being of mothers and children. Our direct intervention focuses on the critical first 1000 days of a child's life, a period pivotal for their growth and development. To achieve maximum impact, we have cultivated a robust network of local women, trained as field officers, who serve as the frontline of maternal and child health care.



Location	No. of families reached
Kurla	6131
Bhiwandi	1240
Ulhasnagar	7359
Wadia	1100
Ambernath	1102

In the 2023-24 fiscal year, our program reached 3634 families across Konanakunte, Gottigere, Uttarahalli and Kengeri in Karnataka.

Malnutrition recovery rate of children in locations with our sustained intervention in the past year:

Location	Percentage moved from malnourished to healthy
Kurla	86.7%
Ulhasnagar	88%
Bangalore	78%

Equipped with the NuTree app, these field officers provide essential counselling and support to families. The App, designed to operate seamlessly in offline conditions as well, offers tailored guidance based on individual needs. By tracking key biomarkers and behavioural changes, we can measure progress and refine our approach.

Our field officers collaborate closely with 2,408 Anganwadis across Madhya Pradesh, Maharashtra, ensuring comprehensive care for pregnant women and children up to two years of age. Through regular growth monitoring, facilitated by digital machines provided by FMCH, we identify potential issues early on. Beyond individual counselling, our program includes group education sessions, such as Pregnancy Clubs and Nutrition Courses, to spread knowledge in communities.

In the 2023-24 fiscal year, our program reached 16,932 families across Kurla, Bhiwandi and Ulhasnagar, Ambernath and the Wadia hospital in Maharashtra:



Anganwadi Accelerator Programme (AAP) – System Strengthening Approach

India's Anganwadi workers are the backbone of maternal and child health, serving millions of mothers and children through the Integrated Child Development Scheme (ICDS). Despite their critical role, they often struggle with overwhelming workloads, limited resources and inconsistent training. This leads to suboptimal outcomes in the first 1000 days of a child's life.



performance has directly benefited 90,400 families in Chhatarpur, covering the entire district. We have begun work on a similar district-wide intervention in Tumkur, Karnataka, and in FY 2024-25, that will help take our programme to 30,000 more families.

By investing in Anganwadi workers, we are not only improving the lives of countless children but also strengthening the foundation of a healthier India.

Our Anganwadi Accelerator Program (AAP) aims to transform this landscape by empowering Anganwadi workers and strengthening the Anganwadi system. Through capacity building, mentorship and data-driven insights, we are working to improve the quality and reach of early childhood care and development services.



Our interventions in Chhatarpur and Kurla have yielded promising results. By providing targeted training and ongoing support, we have seen a significant increase in home visits and the use of essential screening tools. This improved



Shruti Kashyap Choudhari

Director – Projects & Strategy,
BL Kashyap

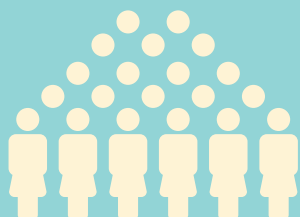
"It has been inspiring to witness FMCH's journey of exploration and innovation in the past year. The organisation's commitment to community-driven approaches, combined with its strategic partnerships, has led to some remarkable achievements. The development of the new Bot shows FMCH's commitment to leveraging technology to reach more people. This innovative tool will definitely provide important information and support to our mothers in the community. I am proud to be associated with FMCH and look forward to contributing to its continued growth and success."



Our Impact in 2023-24



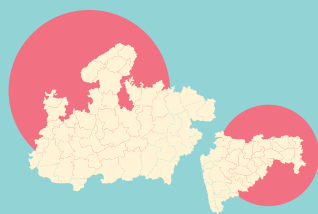
Through both the direct and indirect interventions, we brought down malnutrition by 86%, moving **1600+ children out of malnutrition**, and preventing it in about 1.5L families.



We trained over **200 frontline workers** (including FMCH field officers, Anganwadi workers, and Partner field workers) and reached **27,055 families with the help of NuTree and NuTree Lite apps**.



We conducted **142,000+ counselling and 140,000+ anthropometry sessions** this year, using the NuTree app. NuTree Lite helped us take nutrition counselling and guidance to more than 1.2L new families, with support from the Anganwadi workers.



We reached **2,400+ new Anganwadis** across Chattarpur, Rajgarh and Navi Mumbai.

Again, we outperformed the NFHS-5 national and district-level data across all IYCF indicators.

	NFHS-5	2023-24
Institutional deliveries	88%	99.08%
Early initiation of breastfeeding	41%	84.87%
ANC Visits (>4)	58%	97.5%
IFA Tablets - 100 tablets	44%	94.56%
Complementary feeding on time	46%	73.84%

Savita Prajapati

Anganwadi worker,
Chhatarpur, MP

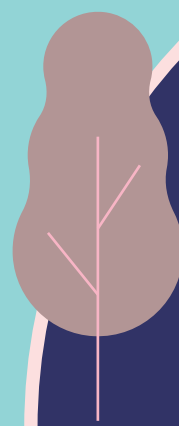
"FMCH's NuTree app has been an invaluable tool for our work. Before every home visit, we consult the app for guidance. Showing women the app's videos has been a game-changer. They find the information on breastfeeding, feeding young children and nutrition incredibly helpful. We have seen a significant improvement in mothers' knowledge about child care.

The NuTree app is essential for our home visits. We appreciate how it provides clear, step-by-step instructions. It's like having a knowledgeable expert with us during every visit, guiding our conversations and ensuring consistent messaging "



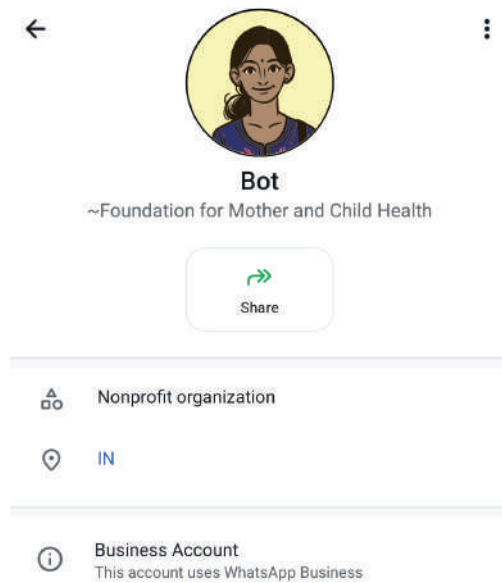


Innovations



FMCH WhatsApp Chatbot: A Digital Companion for Mothers

This year we launched a groundbreaking WhatsApp chatbot to provide essential information and support to mothers during the critical first 1000 days of a child's life. This innovative platform offers comprehensive guidance on pregnancy, nutrition, breastfeeding, complementary feeding, vaccination, and more, directly accessible through the WhatsApp app. Our initial pilot has demonstrated the chatbot's potential to create healthier communities. In the next year, we will expand its reach to Maharashtra and Karnataka, bringing this valuable resource to more families. By developing chatbots in local languages and ensuring 24/7 availability, we aim to make a lasting impact on malnutrition rates.



Artificial Intelligence in our work!



Our field officers work with over 400 families a year. Each of these families have a story of transformation. However, documenting all these stories is a challenge. We partnered with GritWorks to solve this. Gritworks developed an AI powered persona who interviewed our field officers on the phone probing for details, ensuring we capture comprehensive, well-structured narratives. The Bot then documents the story and synthesises the field narrative.

Our field officers and GritWorks successfully collected 55 stories together. The pilot program was a remarkable success, as evidenced by the quality of stories collected. AI effectively addressed the challenges in story collection and analysis, enriching the narratives with depth, context and analytical insights. This groundbreaking approach has set a new standard in understanding community impact.



Ullas Kumar

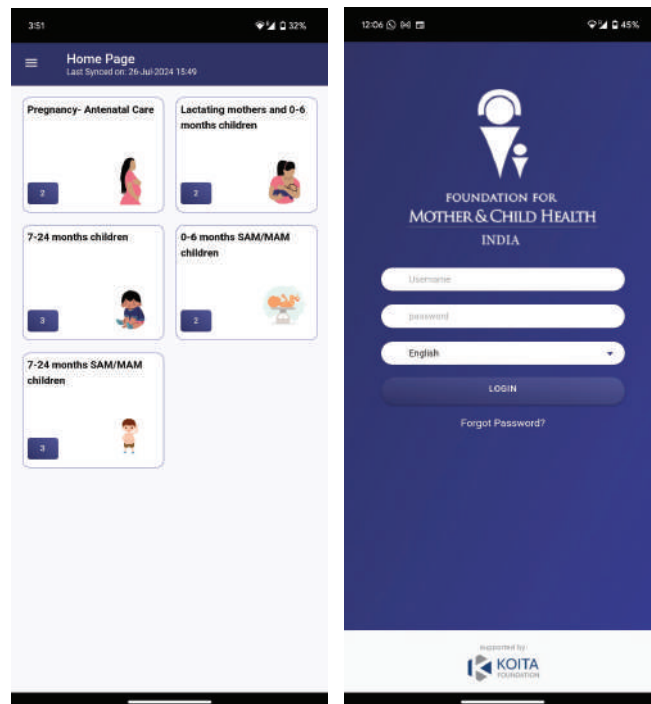
Founder, GritWorks.ai

"In 2023, we embarked on an exciting collaboration with FMCH, venturing into uncharted territory by piloting our AI-powered story collection tool in the bustling neighbourhoods of Kurla, Mumbai. This exploration wasn't just about embracing new technology – it was about uncovering the real, lived experiences of the mothers and children we serve. Over 12 intense days in August and September, FMCH's team of 10 field officers embraced GritWorks' cutting-edge approach. The result? An astounding 55 authentic, heartfelt stories that breathe life into our impact data. Through this partnership, we met Kesar Jahan, whose haemoglobin levels rose from 9.0 to 11.0 under our care. We witnessed Puja Rajbhar's transformation as her weight increased from 36.5 kg to 48 kg during her pregnancy. And we celebrated with the family of young Kaif Ashraf Shaikh, who grew from a frail 2.7 kg to a healthy 7.2 kg with our intervention. These stories aren't just numbers – they're real people, real lives changed. GritWorks' AI tool helped capture the nuances of each journey, from the challenges faced to the moments of triumph. It allowed field officers like Khushbu, Tarannum and Shehnaaz to delve deeper into each narrative, uncovering insights that might have otherwise been missed. The success of FMCH's pilot program with GritWorks has set a new standard for how they capture and understand impact, paving the way for more innovative approaches in the future."



NuTree Lite

FMCH's NuTree Lite App is an advanced decision-support tool designed to support Anganwadi workers. Developed in collaboration with medical experts and technology specialists, the app incorporates field-based insights to deliver a comprehensive solution. Recognising the need for a more accessible and simplified tool, we built this tool for the overworked, undertrained frontline worker to make counselling easier. This lightweight app offers multilingual support, decision-tree guidance and IEC materials while streamlining data collection. The NuTree Lite is designed for offline use and enables seamless WhatsApp integration, facilitating efficient counselling and improving service delivery. This version empowers Anganwadi workers to deliver high-quality services, even in remote areas. Through these innovative digital solutions, we will optimise resource allocation, improve service delivery and ultimately reduce malnutrition.



The Health Indicator Tape

Malnutrition is a complex issue with roots deeply embedded in the first 1000 days of life. Compounding the problem is the inability of many families to recognise malnutrition in their children until severe symptoms appear. To address this, we have developed innovative solutions. We have modified the MUAC tape designed by WHO for the African continent to identify SAM/MAM status of Indian children. Our modified MUAC tape, the Health Indicator Tape (HIT), empowers parents to assess their child's nutritional status with 80% accuracy.



We have successfully piloted the HIT in Bhiwandi, and are going to expand this initiative to other locations.

The NuTree App's Composite Indicator Score

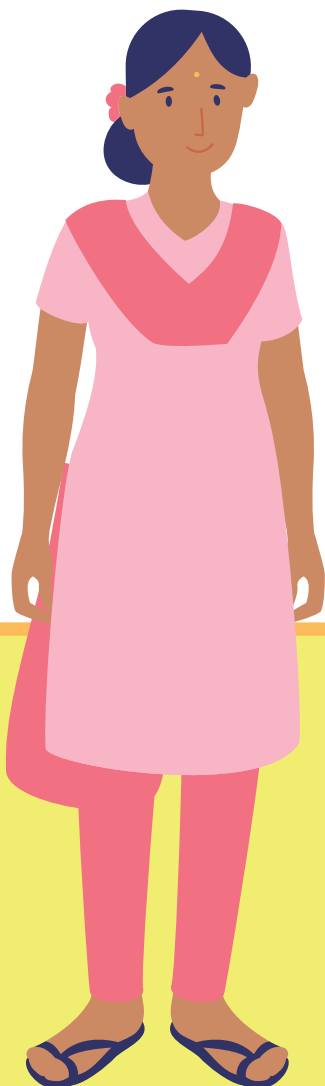
There are several indicators to track in the first 1000 days. In order to make it easier for our teams and to use data better, we built the composite score. This score is a combination of all the parameters that need to be considered for a person depending on the phase they are in. For example, for a pregnant mother, the composite score includes the meal frequency, diet diversity, hospital registration, antenatal checkups, and WASH practices. The Composite Indicator Score identifies areas where each mother or child needs the most improvement, allowing us to personalise our interventions for optimal health outcomes. To ensure effective utilisation of this new tool, we have been organising internal training sessions at different locations. The sessions equip our field officers with a thorough understanding of the score and its application. Moving forward, we are:

- Encouraging and monitoring field officers' utilisation of the Composite Indicator Scores.
- Providing personalised support to those who



- scored lower on the knowledge assessments to ensure successful integration of the new feature.
- Integrating daily practice of using the Composite Indicator Score into field officers' routines.

By empowering our team with this innovative tool and comprehensive training, we aim to significantly improve the health and well-being of our mothers and children during their most critical developmental window.



Uma Gupta

Mother,
Kurla

"I have been part of the FMCH family for about three years now. While I had some basic knowledge of food and nutrition, FMCH truly opened my eyes to the world of healthy eating. During my fifth month of pregnancy, their support helped me overcome challenges and reduce my stress.

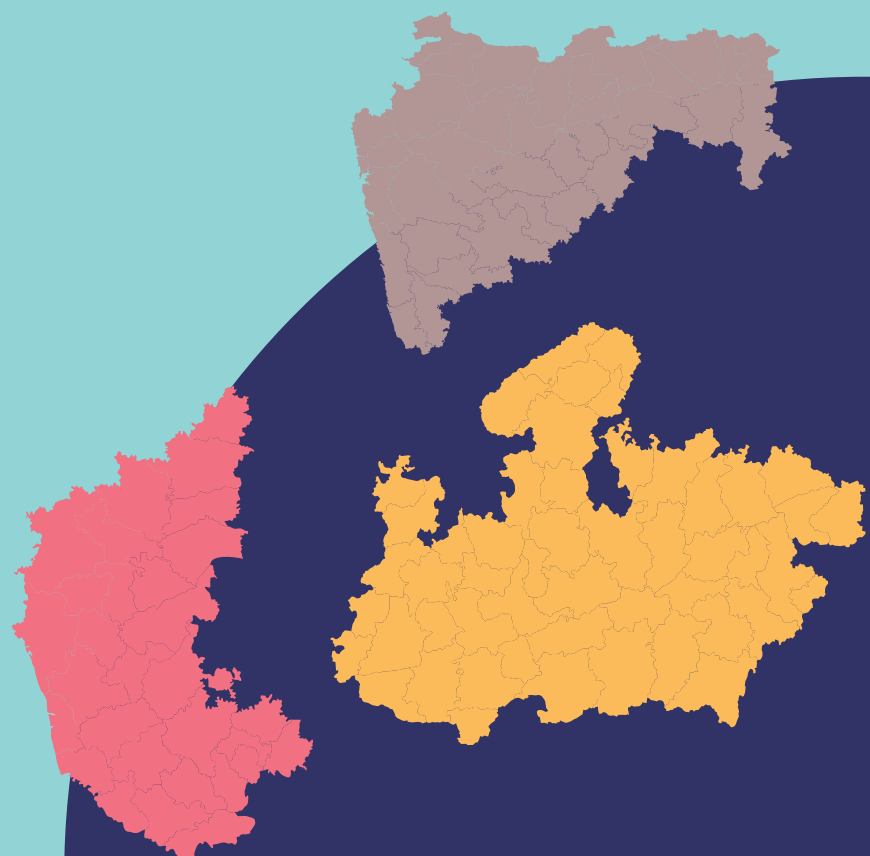
After my baby was born, FMCH provided invaluable guidance on infant feeding, from portion sizes to introducing solid foods. This is my second baby and I had no such knowledge when I had my first baby. I was even fortunate enough to participate in a MasterChef competition during Nutrition Month, which deepened my understanding of nutrition. Inspired by what I have learned, I created my own food and nutrition charts for my family to promote healthy eating habits at home."



Expansion

This year we expanded into

- Karnataka (Bengaluru and Tumkur)
- Mumbai (Navi Mumbai, Ullhasnagar [KMC] Ambernath)
- Madhya Pradesh (Chhatarpur and Rajgarh)





Training in Karnataka



Mother Leader Pilot



Training in Ambernath - direct location expansion



Donor visits



Training in Navi Mumbai - direct location expansion



Strategy discussion with CDPO and Supervisors in MP



Kangaroo Mother Care kit distribution in Ulhasnagar



Training in Chhatarpur, MP

Rajiv Singh

District Program Officer,
Chhatarpur, Madhya Pradesh

"t was a wonderful partnership with FMCH to combat malnutrition in the District Chhatarpur. Together, we not only fermented a robust strategy, but also executed with utmost sincerity & dedication.

The biggest testimony is the way we expanded, so quickly, from a pilot of 100 AWCs to all 2058 AWCs in less than a year.

The team FMCH is a silent crusader against child malnutrition. Their Nutri-lite app has emerged as a potent tool of BCC in Health & Nutrition education.

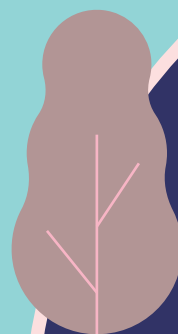
We sincerely express gratitude towards their dedicated & valuable support in the district. Best Wishes!"





The Team

Our team had a fantastic year, growing together and creating lasting memories. From community events to movie days, we've had a blast!





World Breastfeeding Week celebrations



Nutrition Month celebrations



On the occasion of Women's Day, we organised a small introduction and get together session for our Mother leaders in the community.



Onil Kulkarni, a certified POSH trainer and educator, was invited to train our team in Mumbai.



A big thank you to Red Chillies Entertainment for sponsoring 200 tickets for the movie Pathan. Our frontline workers, dressed in iconic Pathan attire, are true heroes in their communities. This gesture is a wonderful recognition of their efforts.



Workshops conducted at private hospitals in Kurla during World Breastfeeding Week



Oral Health Camp



Our team participated in Wipro Partner event organised by Wipro cares in Mumbai



A Mother's Journey to Nourishment

Ulhasnagar

Nitu Kohli, a resident of Kheimane, was expecting a baby boy when she unexpectedly welcomed twin babies. Despite the joy, both infants were diagnosed with Severe Acute Malnutrition (SAM), a surprising challenge for a well-educated and financially stable family.

Concerned about her twins' health, Nitu sought guidance from our field officer. It became evident that formula feeding, prescribed by doctors due to insufficient breast milk, was hindering their progress. Through comprehensive counselling, our officer emphasised the importance of exclusive breastfeeding, providing support on latching, positioning and milk production.

Recognising that Nitu's diet was also impacting her milk supply, the officer introduced a meal plan to increase her nutritional intake. With consistent support and guidance, Nitu successfully overcame breastfeeding challenges. The twins thrived under this care, gaining weight steadily and overcoming SAM. Their journey shows the power of early intervention and the importance of maternal nutrition in infant health.



Devishree Radhakrishnan

Advisory Team Member
Vanavil Trust

Over the past year, Vanavil's collaboration with FMCH has been crucial in raising awareness and protecting the health of young mothers and infants from the Nomadic tribes in Tamil Nadu's delta districts. Our partnership began with us translating the FMCH's Nutree App into Tamil, to effectively use the app within our nomadic tribal community.

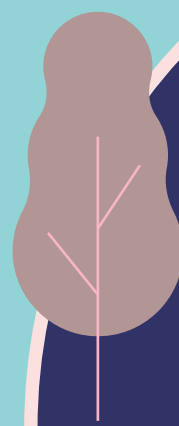
FMCH's trainers have been very knowledgeable, giving our team thorough training that took extra time and effort due to language barrier. As the champion for Vanavil's Malnutrition Project, I often translated these sessions for our trainers. Translation meant extended hours, but the FMCH trainers remained enthusiastic and supportive, always willing to go the extra mile.

This partnership has significantly enriched our understanding of nutrition and malnutrition prevention. We continue to learn with the help of FMCH, especially Shreya, the super cheerful trainer, and hope to reduce malnutrition in the community we work.

A special thanks to Shruthi Iyer who was instrumental in building this collaboration."



Recognition



Shruthi Iyer
Co-Founder and CEO of
Foundation for Mother and Child Health
India (FMCH)

[illegible]

मधुमज्ञ केजले एवं एलसीएचएम टीम के प्रतिनिधि गुणवत्ता भेदों, अन्य गहन, सहजता अंशों एवं टीम उपस्थित थी। इस कार्यक्रम में आगजनी कार्यक्रमों को एक एलसीएचएम का टीएल एलिलेशन के बारे में जानकारी दी गई। इस एलिलेशन का उद्देश्य गुणवत्ता

माताओं, स्तनदान करने वाली माताओं और 2 वर्ष से कम उम्र के बच्चों की माताओं को पोषण का गहवरा मिश्रण है। बता दें कि पाइड्रेशन फ़ॉर मटर एंड पाइड्रेशन हेल्थ, एक सामाजिक संगठन, पिछले 14 वर्षों से मुंबई और मुंबई उपनगरों में गर्भवती और स्तनपान कराते

पहली मछली और 0 से 2 वर्ष की उम्र के बच्चों के साथ सहाय्य और पोषण के क्षेत्र में काम कर रहा है। एचएससीएच संस्थान परिवोजना के तहत बसती स्थल पर पहले 1000 दिनों के लिए किंवदंती बल विकास परिवोजना की 50 ऑर्गेनाइजिंगों में काम कर रहा है।

Our AAP program featured in local news

The plan is to work with 65 anganwadi centres to assess the dietary habits and gaps in the local communities.

 Meghalok Giri

Last Updated 13 October 2023, 05:09 IST



Representative image. Credit: iStock Photo

A Mumbai-based NGO has undertaken a year-long intervention to raise awareness about malnutrition among new and expectant mothers in Bengaluru.

FMCH featured in Deccan Herald



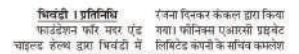
2023 RAINER ARNHOLD FELLOWS



SHRUTHI IYER

FOUNDATION FOR MOTHER
AND CHILD HEALTH
2023

Selected for Rainer
Arnhold Fellowship



कुपोषण की व्यापकता को मापने में मिलेगी मदद

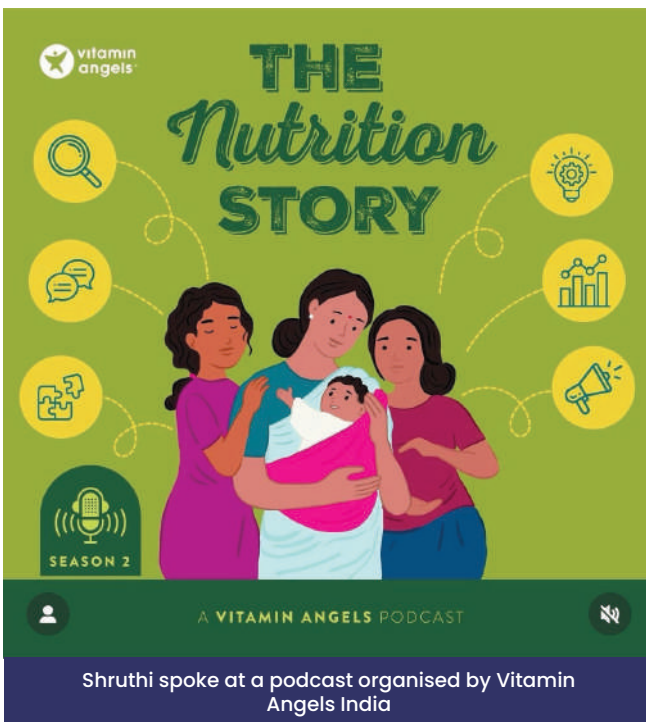
जनरलशास्त्र पर बच्चों और माताओं के बीच कुपोषण को लपकता को मापने में मदद मिलेगी। कार्यक्रम का पार्श्वगत विकास अत्यंत एकीकृत बात विकास परिषद्ना भिंडो-सूरी का कार्य है।

14 Mar 2024 · Page 2

Our exit programs
featured in local news



FMCH is one of the
"Most Trusted"
nonprofits in India,
receiving the "Gold
Certified Seal" of trust
from Give India



Shruthi spoke at a podcast organised by Vitamin Angels India



Jesmina got into ILSS program



Bhagyada got certified as lactation consultant

Bhagyada was invited to speak at a panel discussion on 'Strengthening Public Systems for Foundational Education in Maharashtra', organised in Pune by Leadership for Equity and Centre for Learning Resources.



A Mother's Battle, a Grandmother's Transformation

Kurla

Shehnaz, a field officer with FMCH, was on a routine visit to the Kaju Pada area of Kurla when she met Araham, a frail four-month-old. Living with his parents and grandparents, Araham's world was a stark contrast to the vibrant energy of a healthy infant. His father, the sole breadwinner, struggled to balance work and family, while his grandmother seemed resistant to outside intervention.

Shehnaz, undeterred, made Araham's home a regular stop. Slowly, she overcame the grandmother's reservations, gaining her trust one visit at a time. A closer look revealed the seriousness of Araham's condition. Born weighing a mere 1.9 kg, he had only managed to gain just 0.6 kg in four months, a clear sign of severe malnutrition.

Shehnaz realised that Araham's mother was battling both physical and emotional challenges. Lack of support from her husband compounded her distress. With the grandmother's growing trust, Shehnaz, aided by an FMCH anganwadi teacher, initiated a nutrition education program. The grandmother, once a barrier, became an ally. She began to understand the critical role she played in Araham's life.

The transformation was remarkable. In just two months, Araham started thriving. His weight gain was substantial, thanks to the combined efforts of the family and Shehnaz. The once-resistant grandmother now welcomed Shehnaz with warmth, a symbol of their newfound bond. Araham's journey from a malnourished infant to a healthy baby is a story of perseverance, care and the power of human connection.



Dorothy Wagle

Message from the Chairperson



Exploration is crucial for driving innovation and achieving long-term sustainability in our rapidly changing environment. This year, our team has embarked on extensive research and experimentation to identify valuable ideas, technologies, and strategies that will serve our families, resulting in lasting impacts and growth in the communities that need it most.



“

At FMCH, exploration is not confined to the end of the fiscal year; it is deeply ingrained in our organisational culture. We celebrate our team's relentless pursuit of innovative solutions that enable us to serve more effectively and reach a broader audience. We are also deeply grateful to our supporters and donors who stand with us as we look to the future, informed by the lessons of the past. Exploration at FMCH is a collective effort, and together, we are dedicated to making a positive impact on India.

We believe that our commitment to continuous exploration of successful practices, areas for improvement, and innovative ideas and technologies is what sets FMCH apart and has brought us to our current achievements. The challenges faced by mothers and children are complex and ever-evolving; there is no one-size-fits-all solution. Our flexibility and creativity, combined with our dedication to listening and responding to the needs of the communities we serve, empower us to address these challenges effectively. By identifying and solving problems at the front lines, we are positioned to create generational change within our communities.



Audited Financial Report

The Bombay Public Trusts Act, 1950		SCHEDULE IX - [Vide rule 17(1)]					
		FOUNDATION FOR MOTHER AND CHILD HEALTH					
		Registration no. F-31760(Mumbai)					
		INCOME AND EXPENDITURE ACCOUNT FOR THE YEAR ENDED 31ST MARCH 2024					
2022-23	EXPENDITURE		2023-24	2022-23	INCOME		2023-24
	To Expenditure in respect of properties				By Rent		
	- Rates, Taxes, Cesses		-		Accrued	-	
	- Repairs and Maintenance		-		Realised	-	
	- Salaries/Honorarium		-				
	- Insurance		-		By Interest (accrued & realised)		
	- Depreciation		-		On Securities	-	
	(by way of provision of adjustments)				On Loans	-	
	- Other Expenses		-	2,56,875	On Bank account	13,91,023	13,91,023
79,57,989	To Establishment Expenses		48,61,787				
	To Remuneration To Trustees		-		By Dividend		
	To Remuneration (in the case of a math)		-	3,38,08,945	By Donation		4,38,15,109
	to the head of the math, including his				By Donations In Cash or Kind		
	household expenditure, if any				By Grant		
	To Legal Expenses		-		By Income from other source		78,356
	To Audit Fees		-	30,000	By Transfer from Reserve		
	To Contribution and Fees		-				
	To Amounts Written off						
	(a) Bad Debts		-				
	(b) Loans Scholarships		-				
	(c) Irrecoverable Rents		-				
	(d) Other items		-				
	To Miscellaneous expenses		-				
15,93,831	To Depreciation		17,44,670				
	To Amount transferred to Reserve or		-				
	Specific Funds						
	To Expenditure on objects of the trust:						
	(a) Religious		-				
	(b) Educational		-				
	(c) Medical Relief		-				
	(d) Relief of Poverty	3,16,06,736					
	(e) Other Charitable Objects	3,16,06,736	3,16,06,736				
2,15,84,499							
34,79,501	Excess of Income Over Expenditure		50,71,295				
	Carried to Balance Sheet						
3,46,15,820	TOTAL RS		4,32,84,488	3,46,15,820	TOTAL RS		4,32,84,488

AS PER OUR REPORT OF EVEN DATE.

FOR S. P. GUPTA & ASSOCIATES

CHARTERED ACCOUNTANTS

Firm Reg. no. 103445W

Preeti
(Preeti Parasampuria)
Partner

Membership No 131204

Mumbai

Date: 28/09/2024



FOR FOUNDATION FOR MOTHER AND CHILD HEALTH

For the Foundation for Mother and Child Health




Lakshman
Trustee

R. P. Singh
Trustee

Trustee

Trustee



The Bombay Public Trusts Act, 1950		SCHEDULE VIII [Vide rule 17(1)]					
		FOUNDATION FOR MOTHER AND CHILD HEALTH					
		Registration no. F-31760(Mumbai)					
		BALANCE SHEET AS AT 31ST MARCH 2024					
As at 31.03.2023	FUNDS AND LIABILITIES		As at 31.03.2024	As at 31.03.2023	PROPERTY AND ASSETS		As at 31.03.2024
	Trust Funds or Corpus				Immovable properties		
2,39,500	Balance as per last Balance Sheet	2,39,500			Balance as per last Balance Sheet	-	
	Adjustment during the year	-			Additions during the year	-	
2,39,500		2,39,500	2,39,500	-	Less: Sales during the year	-	
	Other earmarked Funds			-	Depreciation up to date	-	
	Depreciation Fund	-		-	Investments		
	Sinking Fund	-		-			
	Reserve Fund	-		-	Furniture & Fixtures		
3,18,70,330	Any Other Fund	3,40,82,715	3,40,82,715		Balance as per last Balance Sheet	34,04,015	
	Loans (Secured or Unsecured)				Additions during the year	26,05,550	
-	From Trustees			34,04,016	Less: Sales during the year	-	
-	From Others				Depreciation up to date	17,44,670	42,64,895
	Liabilities				Loans		
31,13,620	For Expenses		11,15,853		Loans & scholarships		
-	For Advances				Other Loans		
-	For Rent & Other Deposits				Advances		
-	For Sundry Credit Balances				To Trustees		
					To Employees		
					To Contractors		
					To Lawyers		
				2,45,000	To Others		4,75,000
	Income And Expenditure Account				Income Outstanding		
1,08,14,847	Balance as per last Balance Sheet	1,42,94,348			Rent		
	Less: Appropriation if any	-			Interest		
54,79,501	Add: Surplus as per Income and Expenditure Account	50,71,295			Other Income		
	Less: Deficit as per Income and Expenditure Account	-		4,54,48,481	Cash and Bank Balances		
1,42,94,348			1,93,65,643	4,03,661	(a) In Current Account with -	4,96,29,147	
				16,649	In Fixed Deposit Account with	4,31,572	
					(b) With the Trustee	-	
					(c) With the Manager	3,097	
4,95,17,807	TOTAL RS		5,48,03,711	4,95,17,807	TOTAL RS TOTAL RS		5,48,03,711
The above Balance Sheet to the best of our belief contains a true account of the Funds and Liabilities and of the property and Assets of the Trust.							
AS PER OUR REPORT OF EVEN DATE		FOR FOUNDATION FOR MOTHER AND CHILD HEALTH					
FOR S. P. GUPTA & ASSOCIATES		For the Foundation for Mother and Child Health					
CHARTERED ACCOUNTANTS							
Firm Reg. no 103445W							
							
(Preeti Parasrampuria)		Trustee					
Partner							
Membership No 131204		Trustee					
Mumbai		Trustee					
Date: 28/09/2024							



Partners

Deloitte.



THE/NUDGE
INSTITUTE



Contact Us



Foundation for Mother and Child Health India
Safed Pool, Tanaji Nagar, Sai Krupa Rahiwasi
Society, Jarimari, Kurla West, Mumbai 400 072

+91 9101069135

www.fmch-india.org





Towards a malnutrition-free India



FOUNDATION FOR
MOTHER & CHILD HEALTH
INDIA